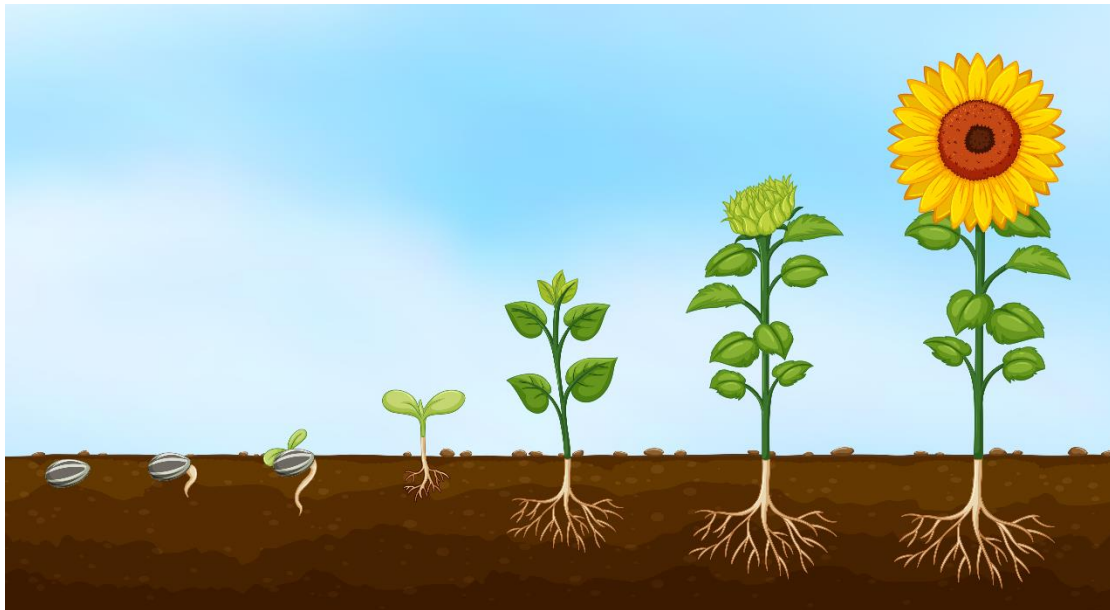


Plants: How do plants grow?



What I should already know

- **Plants** can grow.
- The names of some **common garden plants** (e.g. poppy, rose) and the names of some **common wild plants** (e.g. daisy, dandelion, nettle).
- **Deciduous trees** lose their **leaves** in the autumn every year.
- **Evergreen trees** have green **leaves** all year round.
- The parts of a plant including **petals, fruits, roots, bulbs, seeds, stem, trunks** and **branches**.

Vocabulary

- Bulb
- Crop
- Deciduous
- Evergreen
- Flower
- Flowering
- Fruit
- Leaf/leaves
- Nutrients
- Petal
- Reproduce
- Roots
- Seed
- Stem
- Tree
- Trunk
- Vegetable
- Vegetation
- Weed wild

What I will know by the end of the unit

- I know that plants are living things
- I know that plants need water, light and a suitable temperature to grow and stay healthy.
- I can talk about which plants we eat.
- What are the parts of **common trees** and **plants**?

